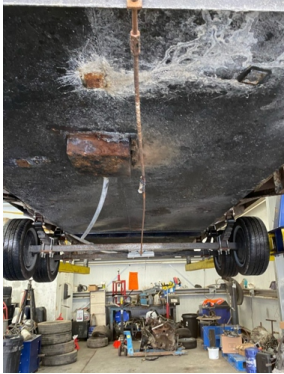


Liquid Metal Epoxy Repair Coating

Case Study

Portable Toilet Trailer Wastewater Tank Repair

Wastewater holding tanks underneath two luxury portable toilet trailers are repaired and strengthened after becoming weakened by external corrosion



Wastewater holding tanks underneath the two trailers were suffering from corrosion and multiple holes



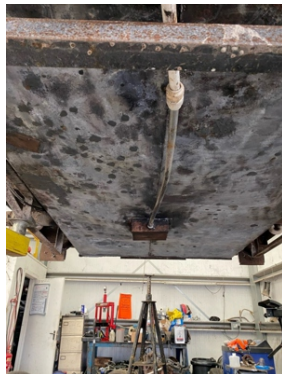
Defect

Two luxury portable toilet trailers were operated by a leading UK supplier. Corrosion had weakened the 3000 litre wastewater holding tanks underneath the units, causing multiple holes to appear.

With the plumbing, fixtures and fittings of both trailers otherwise in good working order and construction of new units extremely costly, the supplier wanted to seal the leaks and reinforce the tanks to avoid replacing the two trailers.



AB Original Black Epoxy Putty filled in all holes



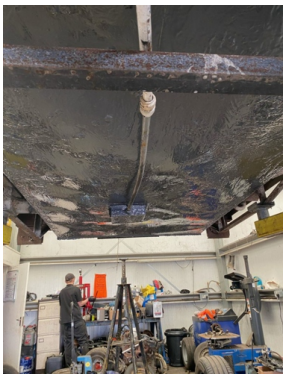
Solution

Both trailers were repaired using the same method. The units were jacked up to access the tank and the metalwork ground to remove grime and rust.

Sylmasta AB Original Epoxy Putty in stick format repaired the holes. Enough putty was cut from the stick to fill a hole, kneaded by hand and pushed in. It hardened inside the hole for a permanent seal.

Once all holes had been filled, the entire 1.3 metres by 2.5 metres underneath of the unit was painted with **Liquid Metal Epoxy Coating** to create a new, smooth, hard-wearing, metallic surface.

This protected the tank from corrosion and encased it in an outer shell, capable of holding wastewater should the original metal be breached in future.



Result

Repairing both trailers cost under £800. Each trailer could go back into service 24 hours after the final Liquid Metal coating had been applied.

The supplier are now using the repair method on other units when corrosion is detected, extending the lifespan of their fleet by up to 10 years.



Liquid Metal was coated onto the underneath of the trailers to strengthen the brittle original metalwork and protect it from future corrosion