

# SYLWRAP Case Study

## Sugar Mill Alcohol Line Live Leak Pipe Repair

Having a SylWrap Contractor Case on site enabled a sugar mill in Costa Rica to make an instant repair when a pinhole leak developed in an alcohol line



*Alcohol juice was spraying through a pinhole leak at a pointed where the line passed through a circular hole in the upper floor of a platform*

### Defect

The pipeline was 70mm in diameter and ran vertically up a tower. It carried alcohol juice extracted from sugar cane during fermentation, which would be used in the production of spirits such as rum and guaro.

A pinhole leak developed in a weakened section where the line passed through a circular hole in an upper floor of the platform. Alcohol juice was left spraying out at around two bar pressure.

### Solution

Because of the short time frame of the sugar milling season, efficiency is paramount and any downtime caused by equipment failure costly.

For this reason, the mill kept a supply of **SylWrap Contractor Cases** on site, enabling instant live leak repairs to pipes as soon as problems are identified.

The line could not be isolated, so **Wrap & Seal Pipe Burst Tape** was used to seal the leak. Despite the space constraints around the pipe, the Tape was stretched and amalgamated successfully.

Once the engineer making the repair was satisfied the leak was sealed, a **SylWrap HD Pipe Repair Bandage** was applied for reinforcement.

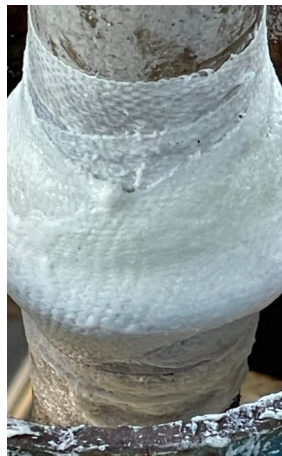


*Wrap & Seal Pipe Burst Tape sealed the live leak despite the space constraints around the pipe*

### Result

With a Contractor Case readily available, it took under 20 minutes from the discovery of the pinhole to the line being successfully sealed.

Only a minimal amount of alcohol juice escaped thanks to the speed and ease of repair. All systems remained operational, meaning there was no disruption to production.



*The repair was reinforced and protected with SylWrap HD Pipe Repair Bandage*