

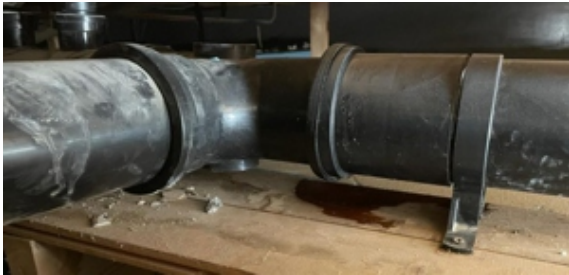
SYLWRAP Case Study

Plastic Pipe Joint Solvent Cement Failure Repair

A homeowner in the United Kingdom repairs a plastic pipe joint leaking water through a failed solvent cement bond in the confined loft space of their house



The joint had to be sealed with the pipe in place due to limited access through a small hole in the ceiling



Water was escaping through failed solvent cement and saturating the wooden floor underneath the joint



AB Original was formed into three long 'sausages' which were wrapped and smoothed around the joint, leaving it completely covered in a ring of epoxy putty



The repair was completed by reinforcing the leaking section with SylWrap HD

Defect

The plastic pipe was located in a confined loft space in the roof of the house which could only be reached through a small hole in the ceiling.

Solvent cement bonding two sections of pipe together had weakened and failed, allowing water to escape and saturate the surrounding wooden floor.

Cutting out and replacing the leaking section was not an option because of the lack of access into the loft. The joint needed to be sealed with the pipe in place.

Solution

Sylmasta AB Original Epoxy Putty was used to encompass the leaking joint around its entire diameter with a watertight material.

AB Original was mixed by hand, formed into a long 'sausage shape' and wrapped around the joint. The putty was pressed down firmly and smoothed against the pipe with a little water.

Three AB Original 'sausages' were used to completely cover the joint, leaving it surrounded by a ring of putty.

SylWrap HD Pipe Repair Bandage was then wrapped over the top whilst the putty remained slightly tacky and soft. It forced AB Original as tightly as possible against the joint for a more effective seal.

Result

Once AB Original and SylWrap HD cured, the leaking joint was fully encompassed with no sign of any water escaping.

The repair took 45 minutes, providing a quick and easy alternative compared with trying to remove and replace the leaking section in such a small work area.